



Reading Road | | Yateley | GU46 7UE

£275,000

Leasehold

Waterford's W
Residential Sales & Lettings

Reading Road |
Yateley | GU46 7UE
£275,000

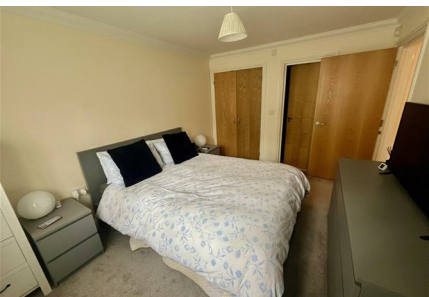
Offered to the market with no onward chain is this ground floor two double bedroom two bathroom apartment.

- No Onward Chain
- Direct garden access
- Allocated & Visitor Parking
- Kitchen with Integrated Appliances
- Electric heating
- Two Bedrooms
- Ground Floor apartment
- Close To Local Amenities
- Two bathrooms
- Double glazing

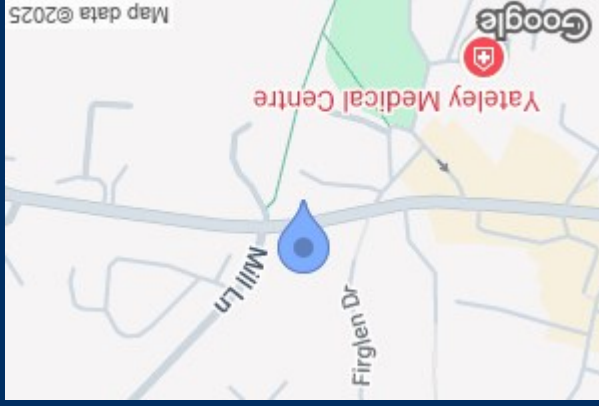
Description

Offered to the market with no onward chain is this ground floor two double bedroom two bathroom apartment located within walking distance of Horseshoe Lake and Yateley Green. There is easy access to major road and rail links as well as being a 5 minute walk from a local bus route. The property is a few minutes walk from Yateley Village centre with amenities, including a Sainsbury's and doctors

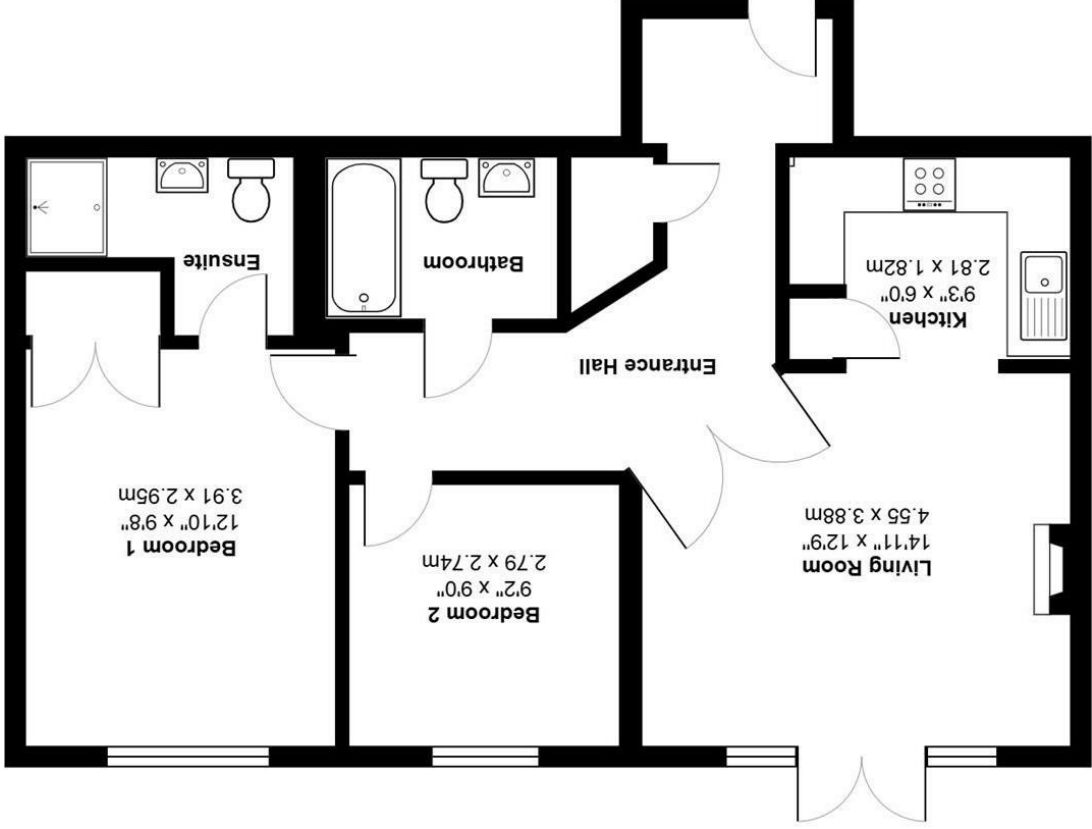




surgery. The accommodation comprises entrance hall, Lounge/Diner, kitchen with fitted appliances, master bedroom with en-suite and a further double bedroom and family bathroom. The property further benefits from direct access from the lounge onto a patio overlooking the communal garden. At the side of the property there is allocated parking.



Energy Efficiency Rating	
Current	Potential
<p>EU Directive 2002/91/EC</p> <p>Not energy efficient - higher running costs</p> <p>Not energy efficient - lower running costs</p>	
<p>100 points A (92-100)</p> <p>80 points B (82-91)</p> <p>60 points C (69-81)</p> <p>40 points D (54-68)</p> <p>20 points E (39-53)</p> <p>10 points F (21-38)</p> <p>5 points G (1-20)</p>	
70	79



35 Plough Road
Yateley
Hampshire
GU46 7UW
01252 870222
yateley@waterfords.co.uk